

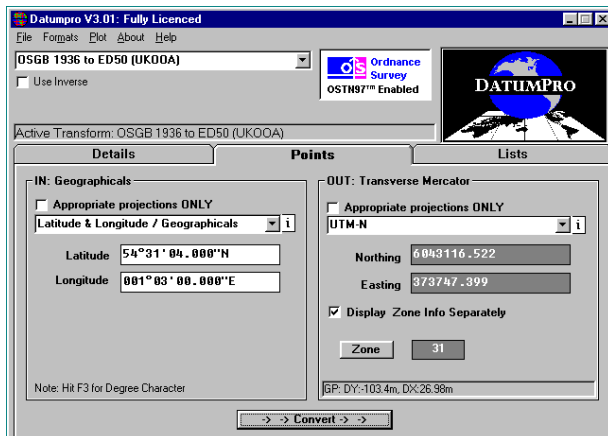
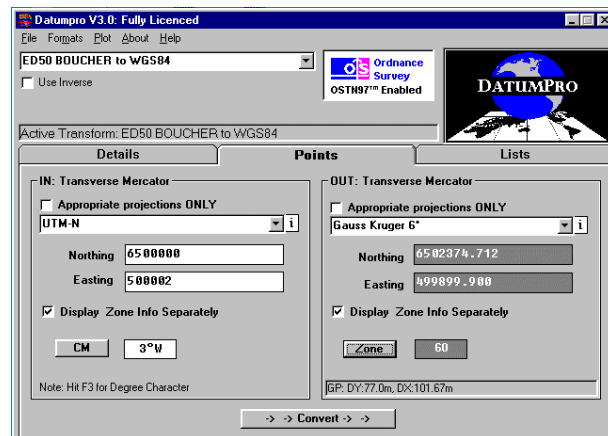


# DatumPro Version 3

*Accurate Conversion for the Professional Cartographer*

DatumPro is the conversion tool for the professional cartographer, providing accurate conversion between both latitude & longitude and grid coordinates *world-wide*. With its easy to use interface, DatumPro contains over 600 datums and 450 grid projections, and yet uses a minimum of system resources. Over its ten year history, thousands of DatumPro users have come to appreciate the simplicity of its design and to rely on the accuracy of its output. DatumPro has found application

both off-shore and on-shore and our customers world-wide include oil companies and government agencies. Now, with an expanded database of datum conversions and with the addition of Lambert conic conformal projections, Version 3 offers more conversions and more facilities than ever before. If your specialism is in the fields of oceanography, marine or land survey, cartography & mapping, hydrography or GPS satellite positioning & location tracking and you have a datum issue then DatumPro could be the answer. We believe we have created the very best tool for your datum/grid projection conversion requirements. Finally, as part of our commitment to listening to our customers requirements, we promise to add your datum/projection free of charge if it's not present in the standard DatumPro Version 3 database. If you want to know more, why not take a look at [www.geomatix.net](http://www.geomatix.net) ?





# **DatumPro Version 3**

*Accurate Conversion for the Professional Cartographer*

## **Featuring:-**

- ◆ **Over 450 Datums Conversions in either direction.**
- ◆ **Grid projections including:**
  - Transverse Mercator (TM), & (South Orientated)
  - Lambert Conic Conformal Projection One /Two Standard Parallel
- ◆ **Built in Generic TM Grids**
  - UTM
  - Gauss Kruger 3° & 6° with Zone Numbers or CMs
- ◆ **Pre-defined Specific Grids and Datums**
  - Over 650 specific and generic TM's, UTM, Lambert Conic etc.
  - See [www.datumpro.linden-software.com](http://www.datumpro.linden-software.com)
  - **We will add your datum/projection free of charge if not present**
- ◆ **Input / Output Formatting**
  - Comprehensive user definable formatting facilities including decimal degrees, degrees minutes, degrees minutes and seconds etc.
  - Thousands of formats are supported for both input and output.
- ◆ **Calculator Mode**
  - Processing of single points by data entry at the keyboard.
- ◆ **Processing of Co-ordinate Lists**
  - Clipboard / Files
  - Convert ASCII text files in one go.
- ◆ **Colour Contour Plots**
  - Colour bands
  - Delta x, Delta Y or Delta R

Windows 95, 98, NT4, ME, XP, 2000, 2003

See [www.geomatix.net](http://www.geomatix.net) for price and download details.

Geomatix Ltd is a UK registered Company  
Company Registration No: 028955777