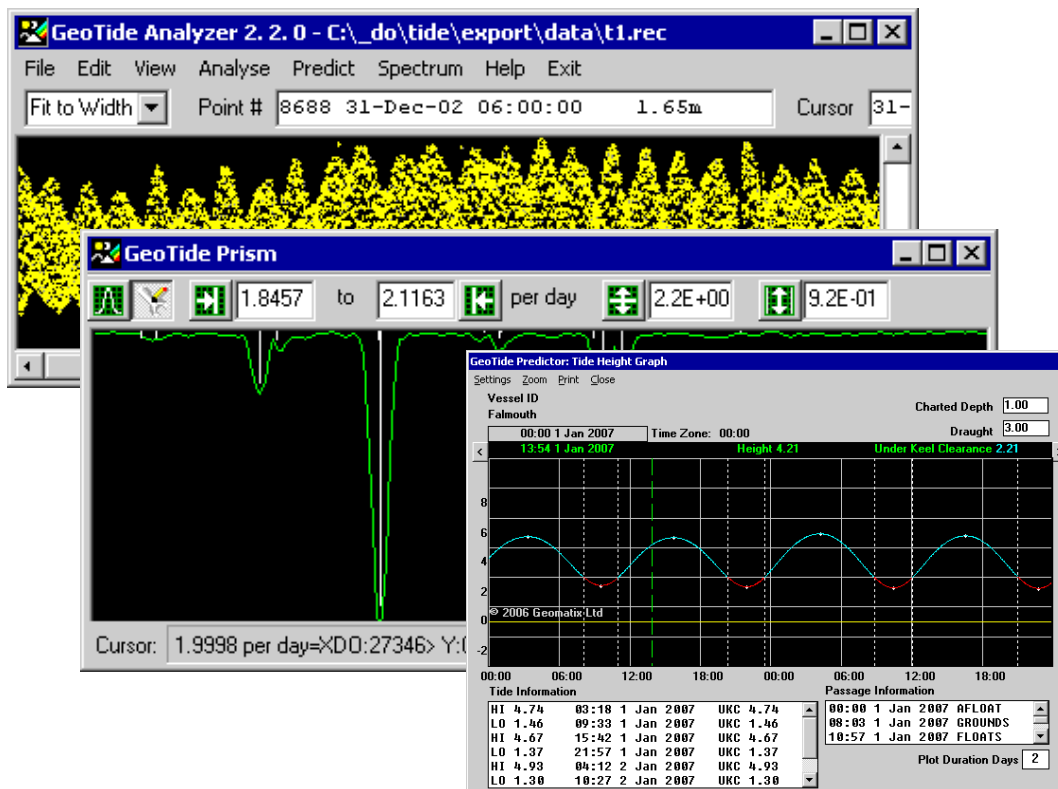




GeoTide



Tidal Analysis & Prediction

GeoTide is the complete solution for your tidal prediction needs. Designed for the professional hydrographer, this unique package contains all the elements needed to create high quality tidal predictions from your tidal data resources.

The tightly integrated suite of program modules comprises:-

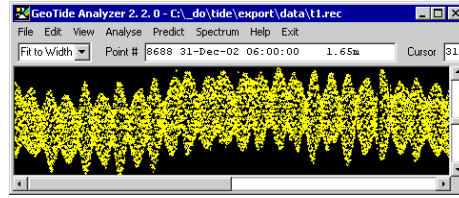
- The tidal **Analys**er, which converts tidal data into harmonic constants - ready for making tidal predictions,
- The **Predict**or, which uses the harmonic constants to create tidal predictions both graphically and in text form, with optional settings including monthly tide table facilities and searches for extreme tides, and web html output,
- The tidal **Prism**, which enables you to examine your tidal data for the presence or absence of harmonic tidal constituents, and
- **Publish**er, our automated document production facility, which handles the layout of multiple tide-tables and graphs within a book, ready for publication.

GeoTide utilises the proven technique of harmonic analysis to produce highly accurate tidal predictions from observed tidal height or stream data. All program units employ the

same user-friendly Windows interface to combine ease of use with flexibility, enabling you to rapidly create accurate tide table output, on the printer and on the worldwide web.

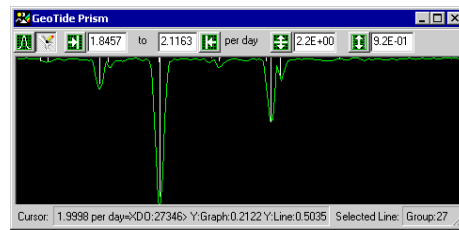
Analyzer

Our analysis tool, the GeoTide Analyzer produces highly accurate harmonic constants from source tidal height or stream data. Accurate harmonic constants are an essential ingredient for producing accurate tidal predictions at any time for a given location in the world. During the analysis into the various tidal constituents, a continuous display of residual RMS error is provided, so that you can monitor the quality and progress of the analysis process on a point-by-point basis. For analysis, you can choose to use a standard set of constituents, or you can create your own set of constituents from the supplied constituents library. GeoTide Analyzer also incorporates a powerful graphical editor which includes point-and-click data point identification, and provides an automated comparison of predicted and observed data. Each tidal analysis is logged for traceability and quality audit.



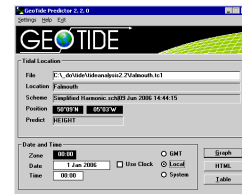
Prism

This powerful optional add-on tool, enables you to carry out a spectrum analysis of your tidal source data. This technique, common in the field of electronic engineering, sweeps the frequency band, searching for any frequency component which may be present. Acting like a radio-scanner or optical spectrometer, GeoTide Prism enables you to identify the presence or absence of any harmonic signal within the source data. Once a missing tidal component has been correctly identified, you can incorporate it in your tidal schedule, so that the accuracy of your tidal predictions will be improved.



Predictor

The generation and layout of tide graphs and tide tables is handled by the GeoTide Predictor program. This provides numerous output formats, both as ASCII files and as HTML web pages. GeoTide produces tables of high and low tide, under keel clearance, height of tide at regular intervals and graphical output. Its output can be manually cut-and-pasted into any word processor, spreadsheet or publishing package.



Publisher

If your requirement is to publish tables for many tidal stations as a volume, you may wish to consider GeoTide Publisher. Publisher, under development, is our automated document production facility, enabling you to layout sets of tide tables in a single book, eliminating the tedium of manual layout. With, its easy to use interface, you can rapidly produce professional looking annual tide-tables, leaving you to concentrate on content, rather than on time consuming form and layout.

TIDE TABLE: Whitby											
1 Jul 2006											
M0000.000											
1	0:00	2.04	7	0:01	0.44	13	0:01	0.54	19	0:01	2.24
2	0:00	0.04	8	0:02	0.24	14	0:02	0.74	20	0:02	1.74
3	0:00	1.04	9	0:03	0.44	15	0:03	1.44	21	0:03	2.74
4	0:00	2.04	10	0:04	0.74	16	0:04	2.14	22	0:04	3.74
5	0:00	3.04	11	0:05	1.04	17	0:05	2.84	23	0:05	4.74
6	0:00	4.04	12	0:06	1.34	18	0:06	3.54	24	0:06	5.74
7	0:00	5.04	13	0:07	1.64	19	0:07	4.24	25	0:07	6.74
8	0:00	6.04	14	0:08	1.94	20	0:08	4.94	26	0:08	7.74
9	0:00	7.04	15	0:09	2.24	21	0:09	5.64	27	0:09	8.74
10	0:00	8.04	16	0:10	2.54	22	0:10	6.34	28	0:10	9.74
11	0:00	9.04	17	0:11	2.84	23	0:11	7.04	29	0:11	10.74
12	0:00	10.04	18	0:12	3.14	24	0:12	7.74	30	0:12	11.74
13	0:00	11.04	19	0:13	3.44	25	0:13	8.44	31	0:13	12.74
14	0:00	12.04	20	0:14	3.74	26	0:14	9.14	32	0:14	13.74
15	0:00	13.04	21	0:15	4.04	27	0:15	9.84	33	0:15	14.74
16	0:00	14.04	22	0:16	4.34	28	0:16	10.54	34	0:16	15.74
17	0:00	15.04	23	0:17	4.64	29	0:17	11.24	35	0:17	16.74
18	0:00	16.04	24	0:18	4.94	30	0:18	11.94	36	0:18	17.74
19	0:00	17.04	25	0:19	5.24	31	0:19	12.64	37	0:19	18.74
20	0:00	18.04	26	0:20	5.54	32	0:20	13.34	38	0:20	19.74
21	0:00	19.04	27	0:21	5.84	33	0:21	14.04	39	0:21	20.74
22	0:00	20.04	28	0:22	6.14	34	0:22	14.74	40	0:22	21.74
23	0:00	21.04	29	0:23	6.44	35	0:23	15.44	41	0:23	22.74
24	0:00	22.04	30	0:24	6.74	36	0:24	16.14	42	0:24	23.74
25	0:00	23.04	31	0:25	7.04	37	0:25	16.84	43	0:25	24.74
26	0:00	24.04	32	0:26	7.34	38	0:26	17.54	44	0:26	25.74
27	0:00	25.04	33	0:27	7.64	39	0:27	18.24	45	0:27	26.74
28	0:00	26.04	34	0:28	7.94	40	0:28	18.94	46	0:28	27.74
29	0:00	27.04	35	0:29	8.24	41	0:29	19.64	47	0:29	28.74
30	0:00	28.04	36	0:30	8.54	42	0:30	20.34	48	0:30	29.74
31	0:00	29.04	37	0:31	8.84	43	0:31	21.04	49	0:31	30.74
32	0:00	30.04	38	0:32	9.14	44	0:32	21.74	50	0:32	31.74
33	0:00	31.04	39	0:33	9.44	45	0:33	22.44	51	0:33	32.74
34	0:00	32.04	40	0:34	9.74	46	0:34	23.14	52	0:34	33.74
35	0:00	33.04	41	0:35	10.04	47	0:35	23.84	53	0:35	34.74
36	0:00	34.04	42	0:36	10.34	48	0:36	24.54	54	0:36	35.74
37	0:00	35.04	43	0:37	10.64	49	0:37	25.24	55	0:37	36.74
38	0:00	36.04	44	0:38	10.94	50	0:38	25.94	56	0:38	37.74
39	0:00	37.04	45	0:39	11.24	51	0:39	26.64	57	0:39	38.74
40	0:00	38.04	46	0:40	11.54	52	0:40	27.34	58	0:40	39.74
41	0:00	39.04	47	0:41	11.84	53	0:41	28.04	59	0:41	40.74
42	0:00	40.04	48	0:42	12.14	54	0:42	28.74	60	0:42	41.74
43	0:00	41.04	49	0:43	12.44	55	0:43	29.44	61	0:43	42.74
44	0:00	42.04	50	0:44	12.74	56	0:44	30.14	62	0:44	43.74
45	0:00	43.04	51	0:45	13.04	57	0:45	30.84	63	0:45	44.74
46	0:00	44.04	52	0:46	13.34	58	0:46	31.54	64	0:46	45.74
47	0:00	45.04	53	0:47	13.64	59	0:47	32.24	65	0:47	46.74
48	0:00	46.04	54	0:48	13.94	60	0:48	32.94	66	0:48	47.74
49	0:00	47.04	55	0:49	14.24	61	0:49	33.64	67	0:49	48.74
50	0:00	48.04	56	0:50	14.54	62	0:50	34.34	68	0:50	49.74
51	0:00	49.04	57	0:51	14.84	63	0:51	35.04	69	0:51	50.74
52	0:00	50.04	58	0:52	15.14	64	0:52	35.74	70	0:52	51.74
53	0:00	51.04	59	0:53	15.44	65	0:53	36.44	71	0:53	52.74
54	0:00	52.04	60	0:54	15.74	66	0:54	37.14	72	0:54	53.74
55	0:00	53.04	61	0:55	16.04	67	0:55	37.84	73	0:55	54.74
56	0:00	54.04	62	0:56	16.34	68	0:56	38.54	74	0:56	55.74
57	0:00	55.04	63	0:57	16.64	69	0:57	39.24	75	0:57	56.74
58	0:00	56.04	64	0:58	16.94	70	0:58	39.94	76	0:58	57.74
59	0:00	57.04	65	0:59	17.24	71	0:59	40.64	77	0:59	58.74
60	0:00	58.04	66	0:59	17.54	72	0:59	41.34	78	0:59	59.74
61	0:00	59.04	67	0:59	17.84	73	0:59	42.04	79	0:59	60.74
62	0:00	60.04	68	0:59	18.14	74	0:59	42.74	80	0:59	61.74
63	0:00	61.04	69	0:59	18.44	75	0:59	43.44	81	0:59	62.74
64	0:00	62.04	70	0:59	18.74	76	0:59	44.14	82	0:59	63.74
65	0:00	63.04	71	0:59	19.04	77	0:59	44.84	83	0:59	64.74
66	0:00	64.04	72	0:59	19.34	78	0:59	45.54	84	0:59	65.74
67	0:00	65.04	73	0:59	19.64	79	0:59	46.24	85	0:59	66.74
68	0:00	66.04	74	0:59	19.94	80	0:59	46.94	86	0:59	67.74
69	0:00	67.04	75	0:59	20.24	81	0:59	47.64	87	0:59	68.74
70	0:00	68.04	76	0:59	20.54	82	0:59	48.34	88	0:59	69.74
71	0:00	69.04	77	0:59	20.84	83	0:59	49.04	89	0:59	70.74
72	0:00	70.04	78	0:59	21.14	84	0:59	49.74	90	0:59	71.74
73	0:00	71.04	79	0:59	21.44	85	0:59	50.44	91	0:59	72.74
74	0:00	72.04	80	0:59	21.74	86	0:59	51.14	92	0:59	73.74
75	0:00	73.04	81	0:59	22.04	87	0:59	51.84	93	0:59	74.74
76	0:00	74.04	82	0:59	22.34	88	0:59	52.54	94	0:59	75.74
77	0:00	75.04	83	0:59	22.64	89	0:59	53.24	95	0:59	76.74
78	0:00	76.04	84	0:59	22.94	90	0:59	53.94	96	0:59	77.74
79	0:00	77.04	85	0:59	23.24	91	0:59	54.64	97	0:59	78.74
80	0:00	78.04	86	0:59	23.54	92	0:59	55.34	98	0:59	79.74
81	0:00	79.04	87	0:59	23.84	93	0:59	56.04	99	0:59	80.74
82	0:00	80.04	88	0:59	24.14	94	0:59	56.74	100	0:59	81.74
83	0:00	81.04	89	0:59	24.44	95	0:59	57.44	101	0:59	82.74
84	0:00	82.04	90	0:59	24.74	96	0:59	58.14	102	0:59	83.74
85	0:00	83.04	91	0:59	25.04	97	0:59	58.84	103	0:59	84.74
86	0:00	84.04	92	0:59	25.34	98	0:59	59.54	104	0:59	85.74
87	0:00	85.04	93	0:59	25.64	99	0:59	60.24	105	0:59	86.74
88	0:00	86.04	94	0:59	25.94	100	0:59	60.94	106	0:59	87.74
89	0:00	87.04	95	0:59	26.24	101	0:59	61.64	107	0:59	88.74
90	0:00	88.04	96	0:59	26.54	102	0:59	62.34	108	0:59	89.74
91	0:00	89.04	97	0:59	26.84	103	0:59	63.04	109	0:59	90.74
92	0:00	90.04	98	0:59	27.14	104	0:59	63.74	110	0:59	91.74