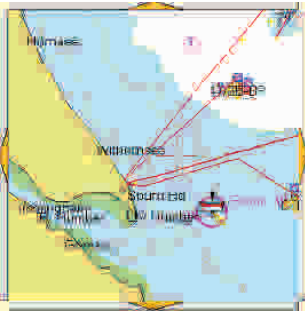


GEOMAPLET



Paper maps have been an important navigational tool for centuries, providing near instantaneous feedback to a user when searching for either textual or graphical information.

Recently however, the growth in GPS positioning and the Internet has increased the requirement for efficient web-based information delivery systems as replacements for paper maps. Unfortunately, current GIS based browsing systems often fail to live up to expectations because of a slow response to user queries, inducing operator fatigue.

Our mapping display engine, GEOMAPLET, is designed to avoid these drawbacks by handling queries for map and textual information locally within the user web-browser. This provides near instantaneous feedback and results in a greatly enhanced user experience.

GEOMAPLET provides point and click feedback, instantly and reliably providing text reports on selected objects or on objects which meet user-defined criteria.

In operation, the user web-browser seamlessly receives the GEOMAPLET containing the map and object attributes when a URL is first visited. From then on GEOMAPLET handles requests locally - avoiding the delays of server-based GIS systems.

If required, GEOMAPLET can also layer the internal interrogable vector map on a raster map background for improved location-related context.

Maps can be uploaded by FTP transfer, without the requirement for reprogramming or web-site modification.

Specification

Client Side: Internet Explorer, Netscape, Mozilla etc
Client Side OS: Microsoft Windows 98/ME/2000/XP / Linux / MacOS
Server Side: Apache Tomcat, Microsoft Windows / Linux
Vector Map: User defined symbology, text, lines and points
Capability: 4000 poly-lines, 50000 symbols, 500KBytes of ASCII Text
Raster Map: From Map Server / GIF images
UPLOAD: Via Object Importer and FTP file transfer

Please contact us for further details.