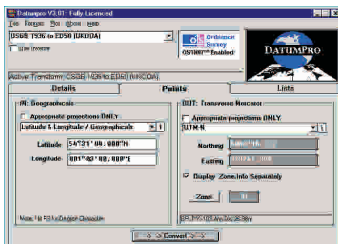


DatumPro



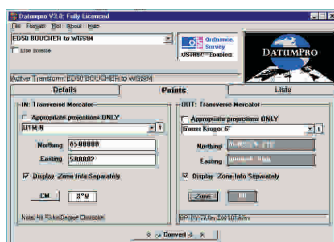
Our well established tool, DatumPro is the ideal grid and datum conversion tool for the professional cartographer, providing accurate conversion between latitude & longitude and/or grid co-ordinates in various projections world-wide.

Over its ten year history, thousands of DatumPro users have come to appreciate the simplicity of its layout and to rely on the accuracy of its output. DatumPro is used both off-shore and on-shore and our customers include oil companies and government agencies.



Now, with an expanded database of datum conversions and with the addition of Lambert conic conformal projections, DatumPro offers more conversions and facilities than ever before. With its easy to use interface, DatumPro contains over 600 datums and 450 grid projections, and yet uses a minimum of system resources.

Furthermore, DatumPro can now process ASCII co-ordinate lists in a variety of position text formats. And if your datum is not present, you can add it to the database yourself using the DatumPro editor or we can add it for you.



Whether you specialise in oceanography, marine or land survey, cartography & mapping, hydrography, GPS satellite positioning or location tracking then DatumPro has been carefully designed with your needs in mind.

DatumPro is an indispensable tool for all your datum or grid conversion requirements.

DatumPro is available as a complete Microsoft Windows package or as a DLL for software developers.

Continued..

DatumPro

Specification

Over 450 Datums Conversions

Grid projections include:

Transverse Mercator TM

Transverse Mercator TM (South Orientated)

Lambert Conic Conformal Projection One / Two Standard Parallel

Generic TM Grids

UTM Grid

Gauss Kruger 3° & 6°

Zone Numbers or Central Meridians

Pre-defined Specific Grids and Datums

Over 650 specific and generic TM's, UTM, Lambert Conic etc.

OSGB36, ED50, etc

See www.geomatix.net for full details.

Input / Output Formatting

User definable formatting facilities including decimal degrees, degrees minutes, degrees minutes and seconds etc.

Thousands of formats are supported for both input and output.

Single Point Converter

Processing of single points by data entry at the keyboard.

Processing of Co-ordinate Lists

Source: Clipboard / Files

Convert ASCII text files in one go.

Colour Contour Plots

Coloured according to distance component in x,y or absolute value.

Operating Systems

Microsoft Windows 95, 98, 2000, NT4, ME, XP